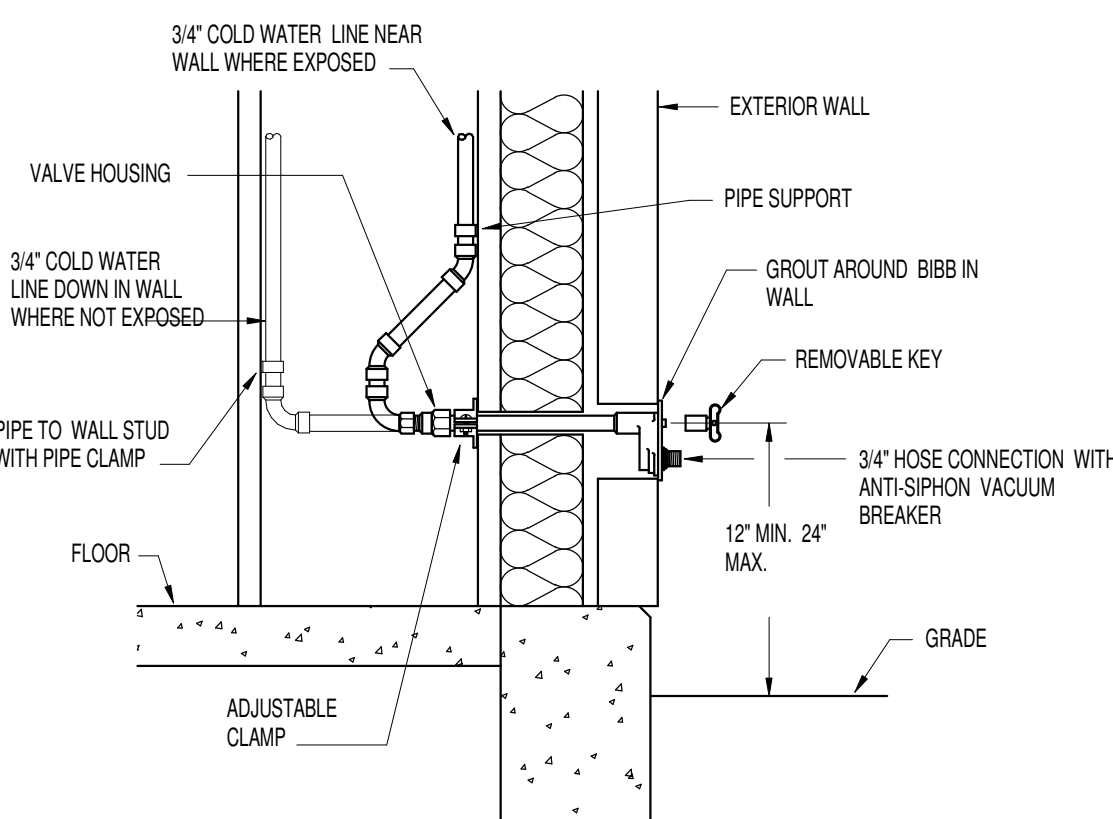


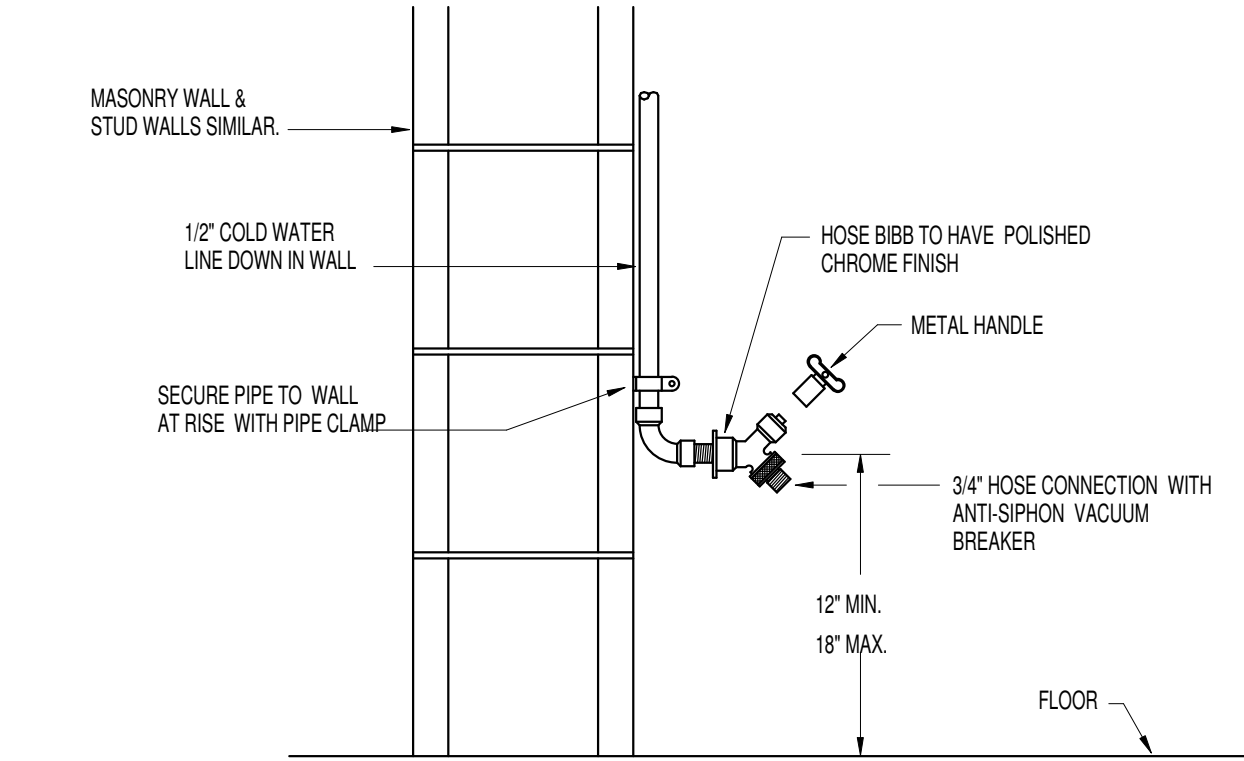
A ROOF DRAIN DETAIL

NO SCALE



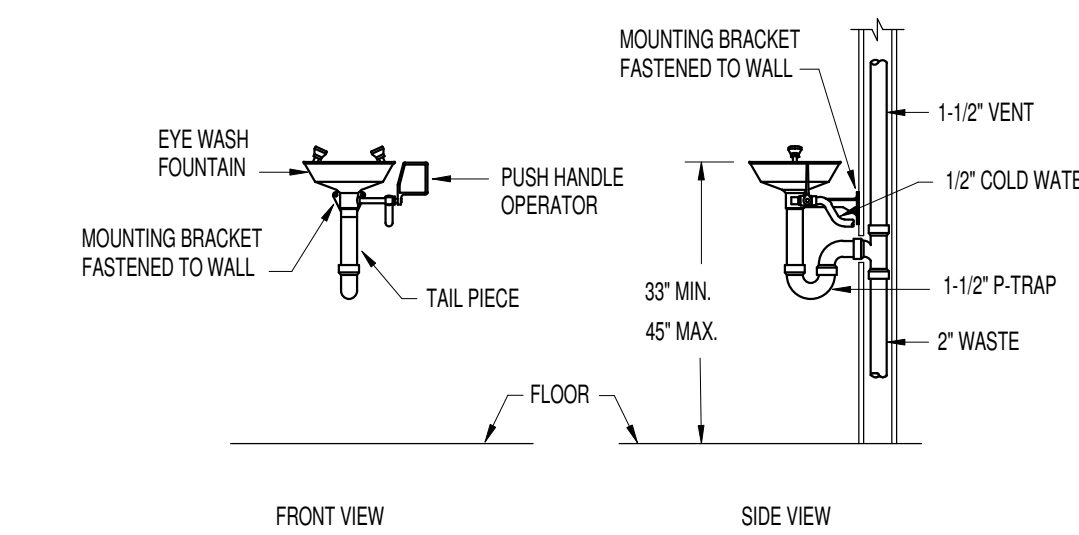
B EXTERIOR HOSE BIBB DETAIL

NO SCALE



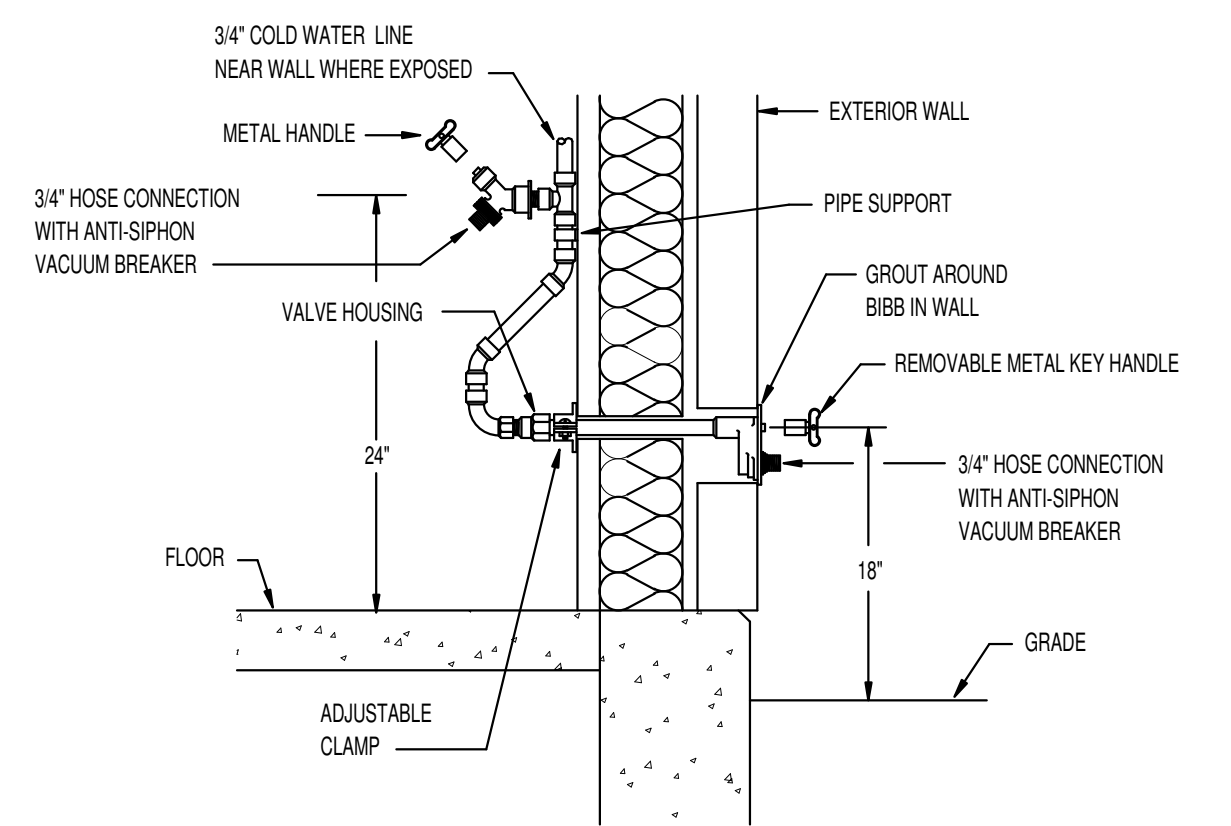
C INTERIOR HOSE BIBB DETAIL

NO SCALE



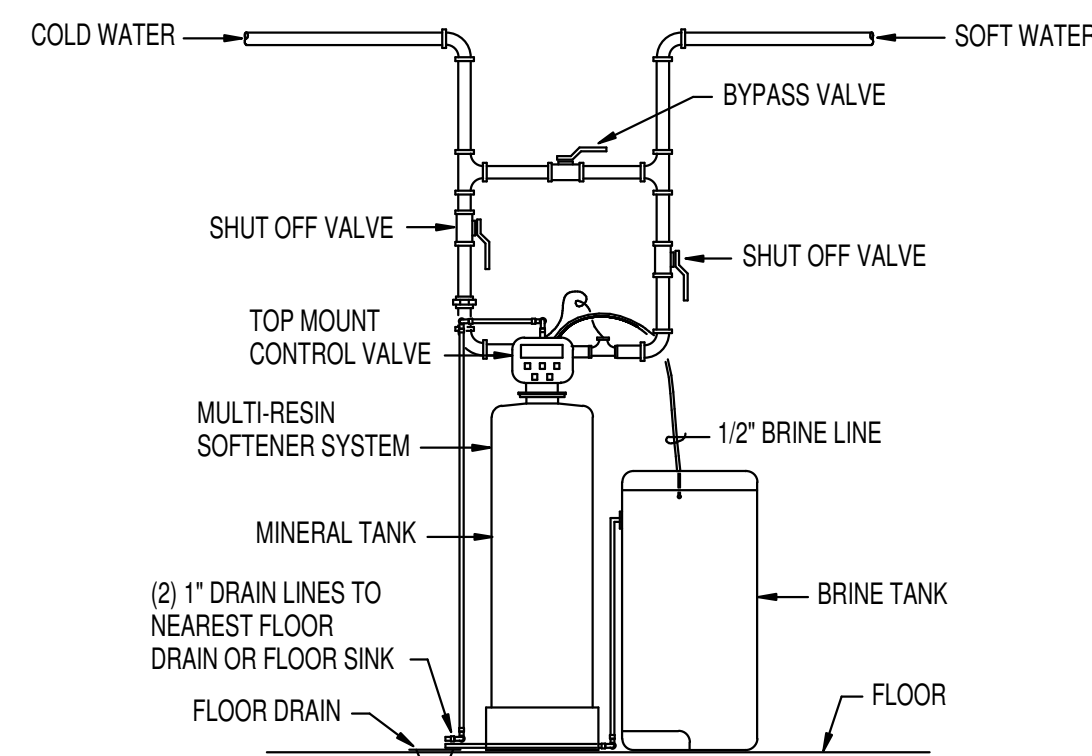
D EMERGENCY EYEWASH DETAIL

NO SCALE



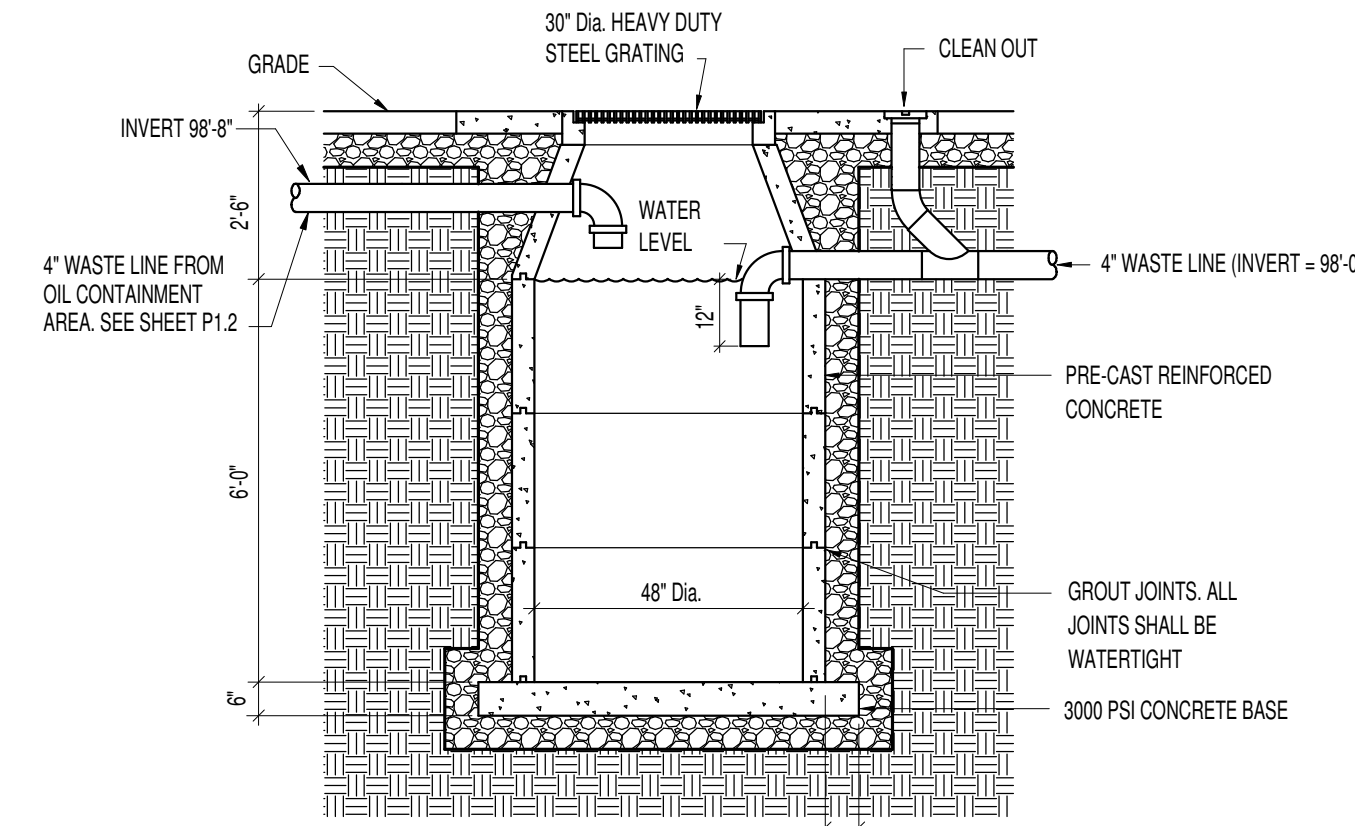
E SHOP HOSE BIBB DETAIL

NO SCALE



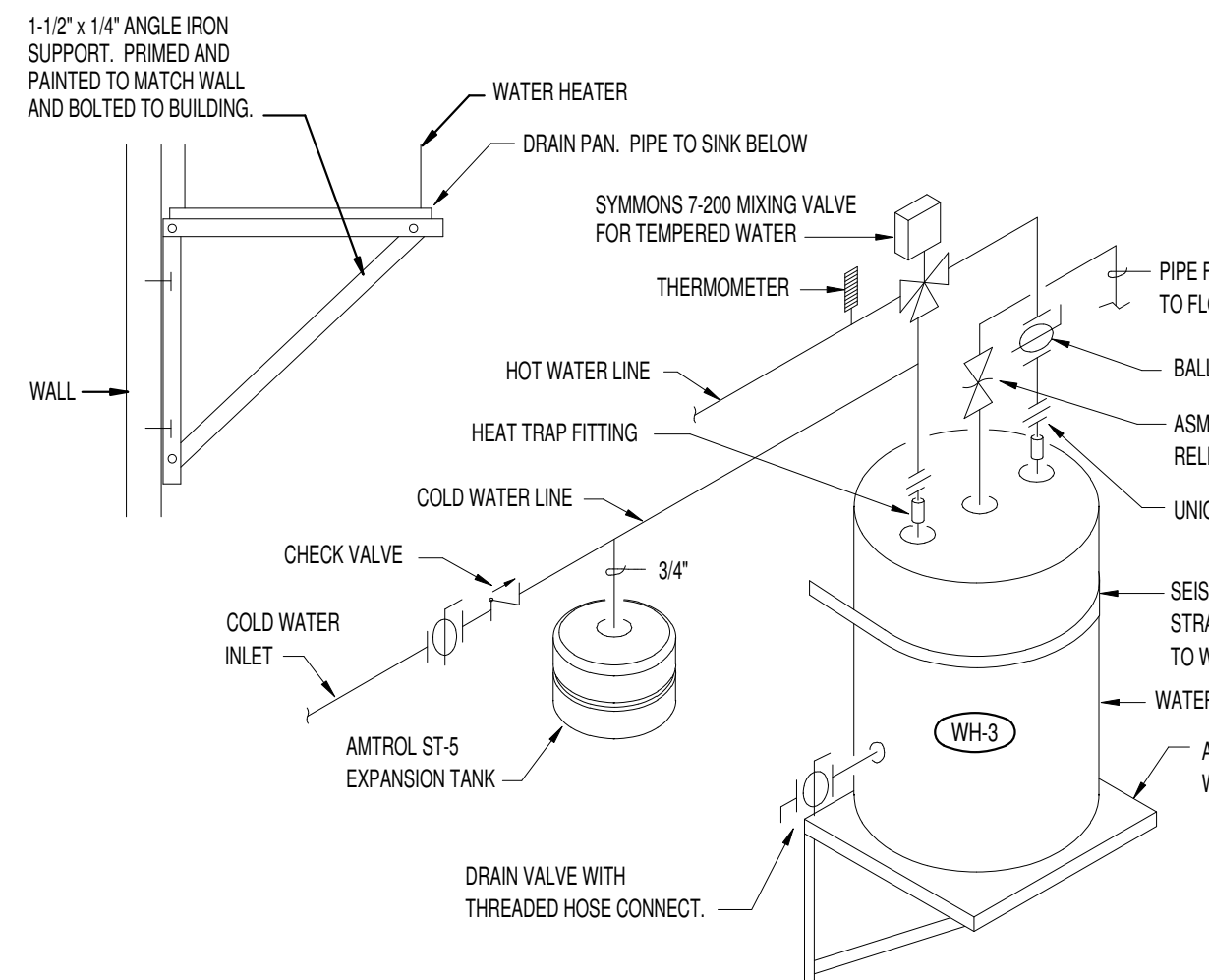
F WATER SOFTENER PIPING DETAIL

NO SCALE



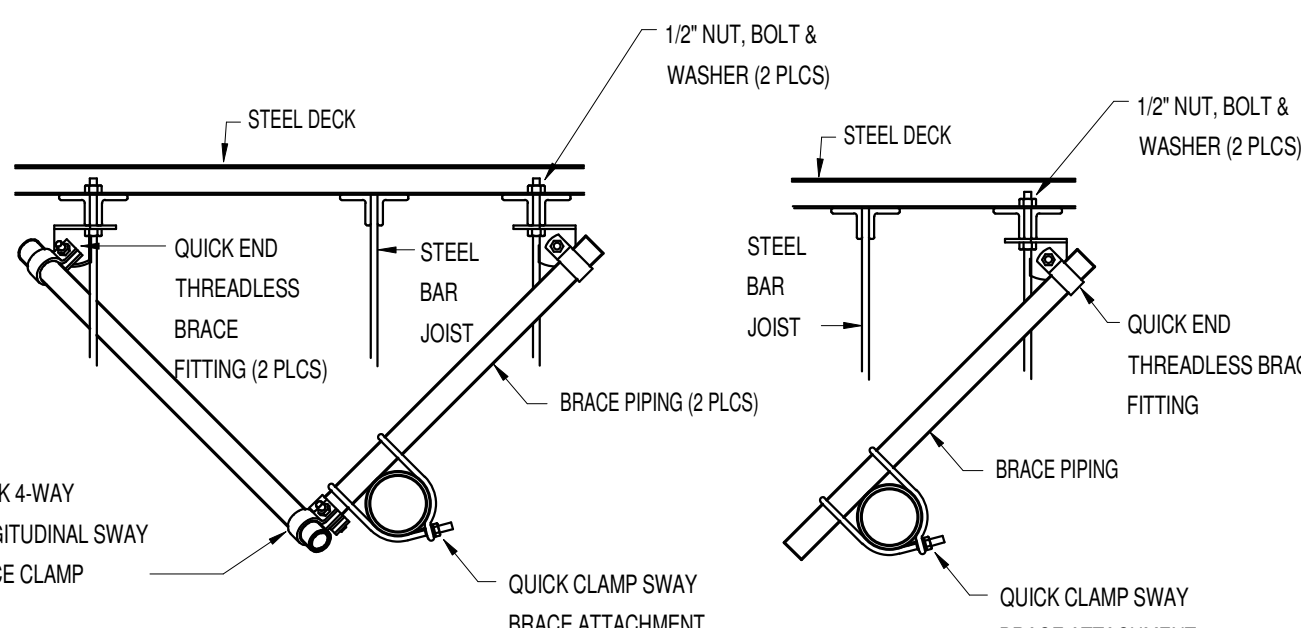
G SAND TRAP DETAIL

NO SCALE



H TANK TYPE WATER HEATER DETAILS

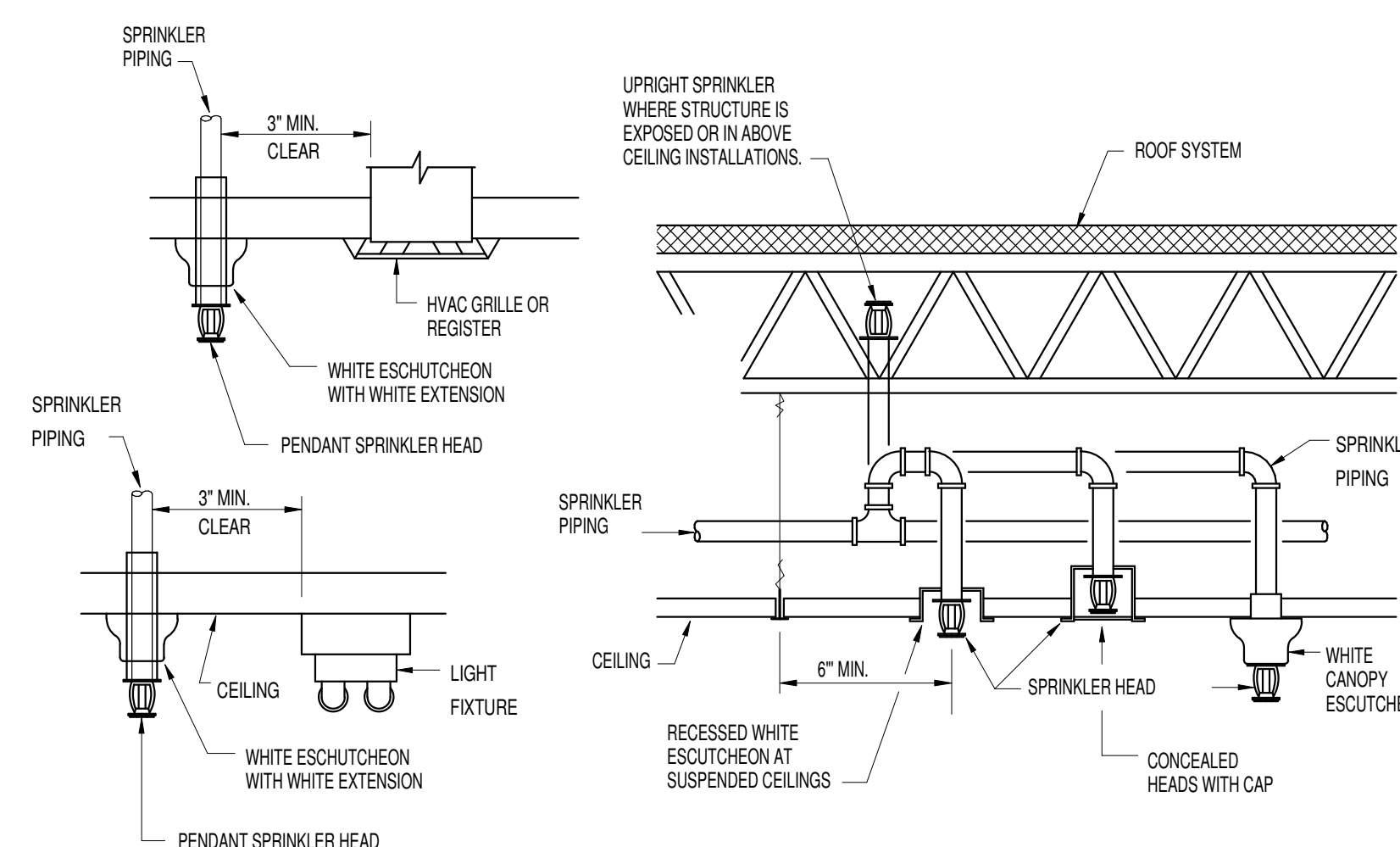
NO SCALE



J SEISMIC PIPE BRACING DETAILS

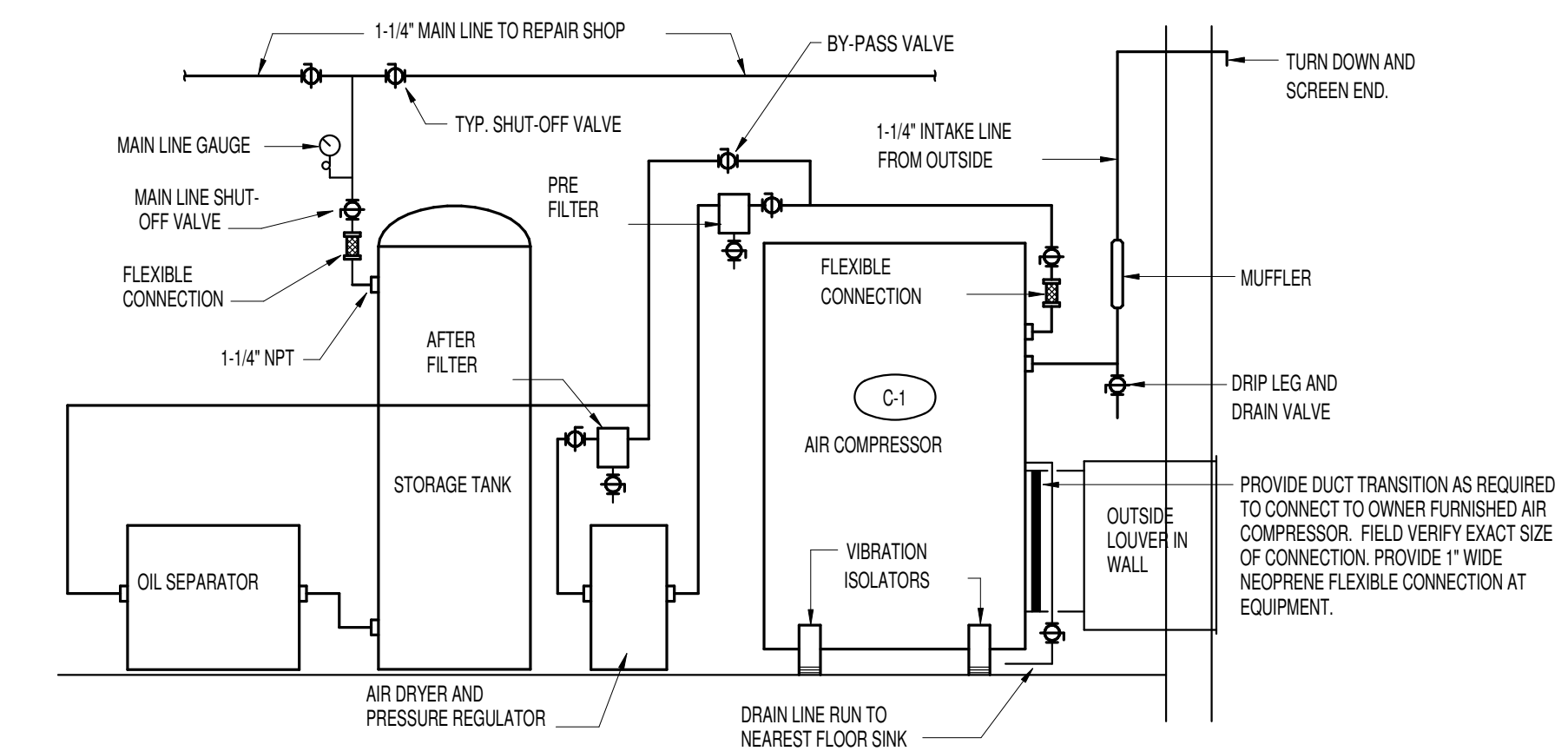
NO SCALE

NOTE: PROVIDE SEISMIC BRACING ONLY IN SEISMICALLY ACTIVE AREAS. BRACING SHALL CONFORM TO THE REQUIREMENTS OF NFPA 13 AND ALL STATE AND LOCAL CODES.



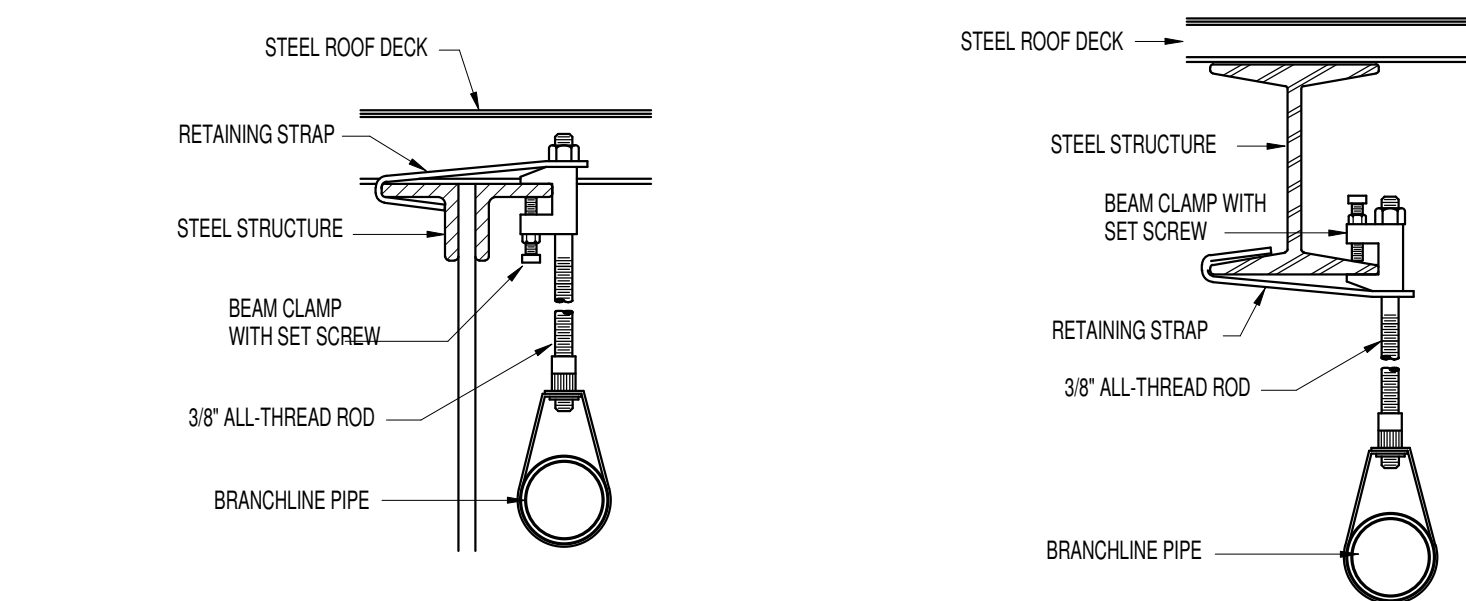
K SPRINKLER HEAD COORDINATION DETAILS

NO SCALE



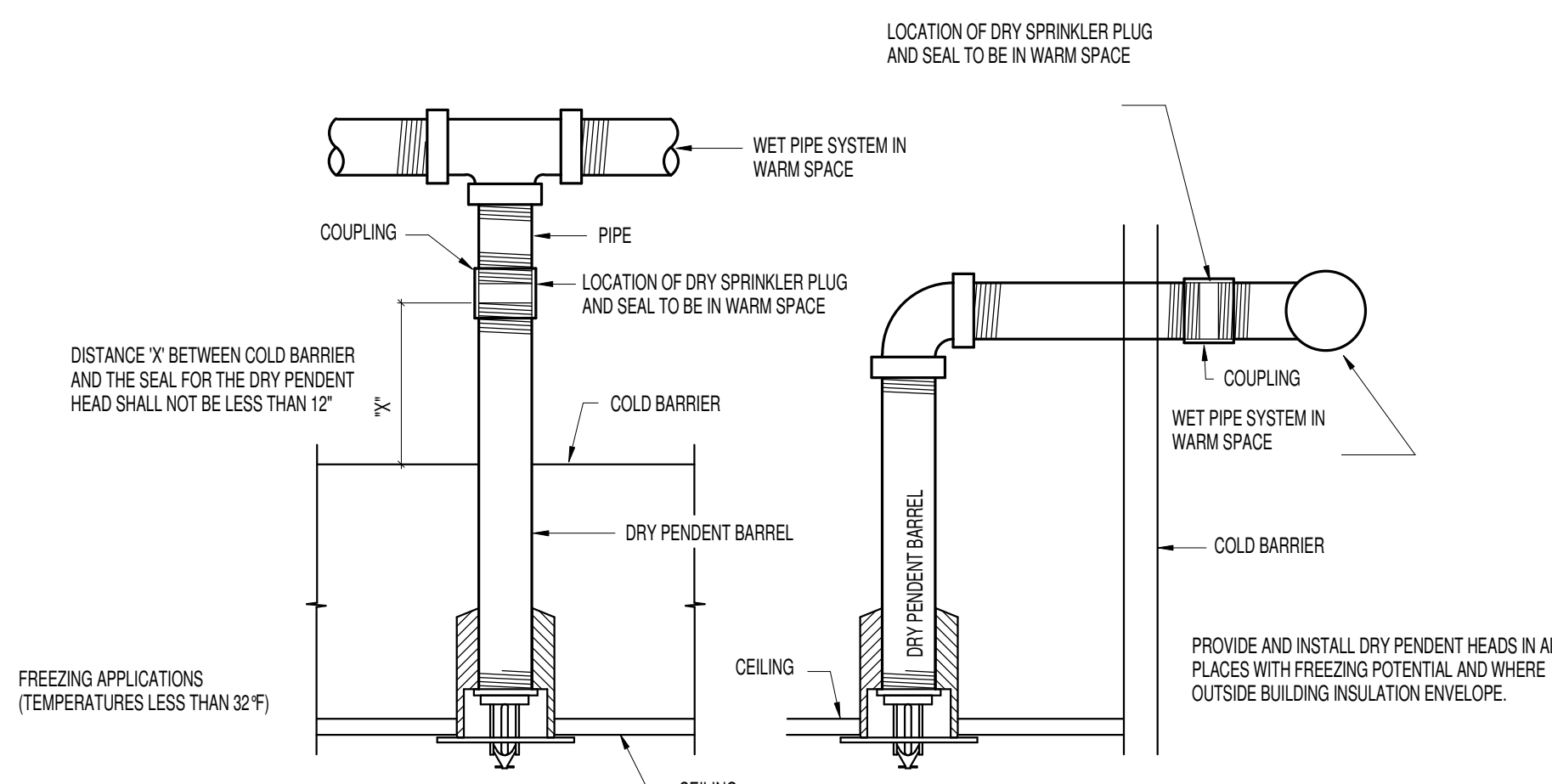
L AIR COMPRESSOR PIPING DETAIL

NO SCALE



M PIPE HANGER DETAILS

NO SCALE

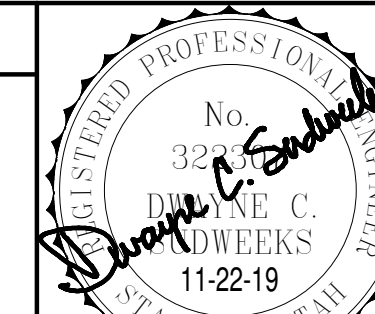


N DRY PENDANT HEAD INSTALLATION

NO SCALE

GENERAL NOTES:

- A- THE CONTRACTOR SHALL CHECK AND VERIFY ALL DIMENSIONS AND CONNECTIONS ON THE JOB SITE. ALL WORK SHALL BE EXECUTED FROM MEASUREMENTS TAKEN AT THE SITE.
- B- THE MECHANICAL CONTRACTOR SHALL BE RESPONSIBLE TO INSURE PROPER CODE CLEARANCES FOR ELECTRICAL AND MECHANICAL ACCESS WHEN INSTALLING ANY EQUIPMENT SUPPLIED BY THE MECHANICAL CONTRACTOR.
- C- IT IS CRITICAL THAT THIS CONTRACTOR COORDINATE EQUIPMENT LOCATIONS WITH PIPING, DUCTWORK, ELECTRICAL CONDUIT AND BUILDING STRUCTURE TO INSURE CODE COMPLIANCE.
- D- CEILING DIFFUSERS ARE SHOWN IN APPROXIMATE LOCATIONS. REFER TO LIGHTING PLANS AND REFLECTED CEILING PLAN FOR EXACT LOCATIONS.
- E- DUCT DIMENSIONS CALLED OUT ON DRAWINGS ARE INSIDE FREE AREA DIMENSIONS. ACOUSTICAL DUCT LINE ARE TO BE ADDED TO OVERALL MEASUREMENTS.
- F- ALL DUCTWORK AND PIPING WHICH PASSES THRU FIRE RATED WALLS TO BE FIRE STOPPED WITH APPROVED FOAM OR SEALANT. REFER TO SPECIFICATIONS FOR APPROVED MANUFACTURERS.



Engineered Systems Associates
 1355 EAST CENTER
 POCATELLO, IDAHO 83201
 PHONE: (208) 233-0501
 FAX: (208) 233-0529
 EMAIL: esa@engsysltns.com
 ESA JOB NUMBER: 19035

PROJECT NO. 16066
 DATE: NOVEMBER 2019
 DRAWN BY: M Jensen
 CHECKED BY: D Sudweeks

DRAWING NO.:

P3.2

A NEW BUILDING FOR:
KENWORTH SALES COMPANY INC.
 1750 SOUTH 1350 WEST
 NEW HAVEN, UTAH

nw architects p.a.
 ARCHITECTURE / PLANNING / INTERIORS
 SCOTT L NELSON A.I.A. KEVIN R BODILY A.I.A. JAMES H WYATT A.I.A.
 990 JOHN ARBON PARKWAY P.O. BOX 2212 - IDAHO FALLS, IDAHO 83402-2212
 (208) 208-5328 (208) 208-5329 (208) 208-5330 (208) 208-5331

PLUMBING DETAILS AND DIAGRAMS

SHEET TITLE:

NO.	REVISIONS